

# CALTEX HELPS PT SUMBER ORGANIK DELIVER THREE YEARS' RELIABLE UPTIME WITH CALTEX HDAX 6500 LFG

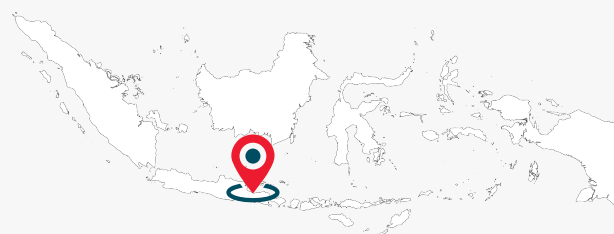
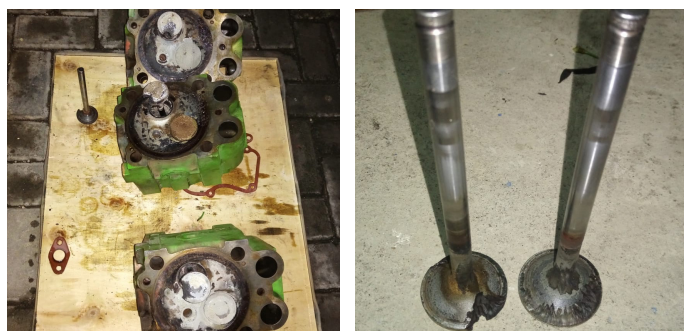
2MW Indonesian landfill gas power plant achieves over 2,000 hour drain interval across INNIO Jenbacher Type 3 gas engines



## THE ISSUE

Running two INNIO Jenbacher 320 gas engines that produce a total of 2MW of power, the customer was seeing frequent unplanned shutdowns, causing widespread power outages.

Upon investigation, extensive damage to valve face and seat guttering was observed. This was caused by the highly corrosive nature of the landfill gas, and general harsh operating conditions. The Caltex Advisory team stepped in to offer help to the customer.



<b>COMPANY:</b>	PT Sumber Organik
<b>LOCATION:</b>	Gresik, East Java, Indonesia
<b>APPLICATION:</b>	Power generation
<b>EQUIPMENT:</b>	INNIO Jenbacher 320
<b>SOLUTION:</b>	Caltex HDAX 6500 LFG Gas Engine Oil SAE 40



## OVER 2,000 HOURS OIL DRAIN INTERVALS ACHIEVED IN LANDFILL GAS ENGINES



## THE SOLUTION

Working with the customer and our Distributor partner, the Caltex Advisory team offered Caltex HDAX 5500 LFG Gas Engine Oil and later upgraded the offering to Caltex HDAX 6500 LFG Gas Engine Oil SAE 40 as the solution. Formulated with advanced ashless dispersants and Caltex proprietary additive technology, HDAX 6500 LFG provides a good balance between the oil's ash content and varying operating conditions to ensure adequate protection for valve faces and the seats.

When operating in these conditions and running on highly corrosive landfill or biogas fuels, this advanced product was the clear choice to optimize plant performance.

A very comprehensive in-service oil analysis program, introduced by Caltex team ensured early detection and a trouble free operation.



## THE RESULTS

The Caltex Advisory recommendations have now been in place for over three years, and the results have been excellent. After previous issues with frequent unplanned shutdowns due to significant valve damage, the customer has had no valve failures whatsoever, no unplanned shutdowns, and is now achieving drain intervals of over 2,000 hours.



## SOLUTIONS DEPLOYED

### Caltex HDAX 6500 LFG Gas Engine Oil SAE 40

HDAX 6500 LFG Gas Engine Oil is a premium quality, high performance low ash, dispersant/detergent type gas engine oil especially formulated for four-stroke landfill gas, biogas, digester gas and sour gas applications.

The product is approved by INNIO Jenbacher for Type 2 & 3, Type 4A and Type 6 C, E engines burning landfill gas, biogas and sewage gas.

### Caltex LubeWatch (previously known as In-Service Oil Analysis)

As you optimize your lubrication program for peak protection and performance, attentive monitoring helps you continue to achieve the benefits. LubeWatch oil analysis helps you detect potential problems and fine-tune your maintenance practices to extend drain intervals, minimize failures and reduce costs.